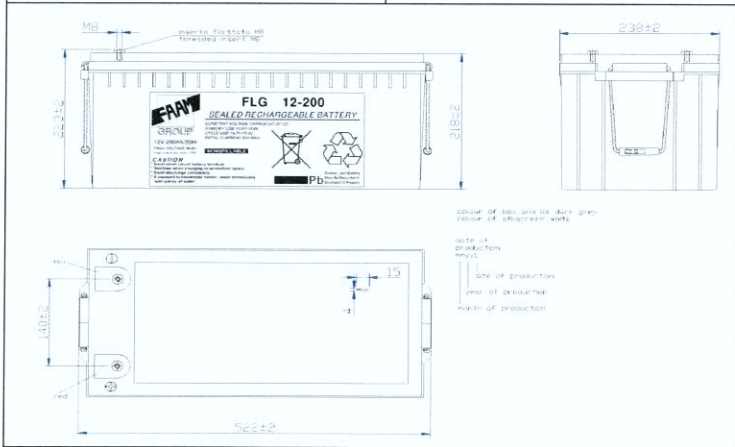
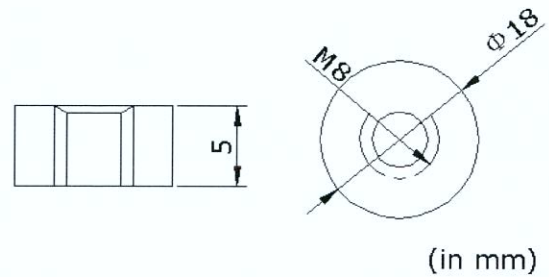


PHYSICAL SPECIFICATION

Nominal Voltage		12V
Nominal Capacity (20Hr)		200Ah
Dimension	Length	522 ±2mm
	Width	238 ±2mm
	Container Height	218 ±2mm
	Total Height	238 ±2mm
Drawing 400215-0		Weight 66,0 Kg ± 5%
Standard Terminal		Bolt Type: M8



Bolt-and-nut terminal
Bolt Type:M8

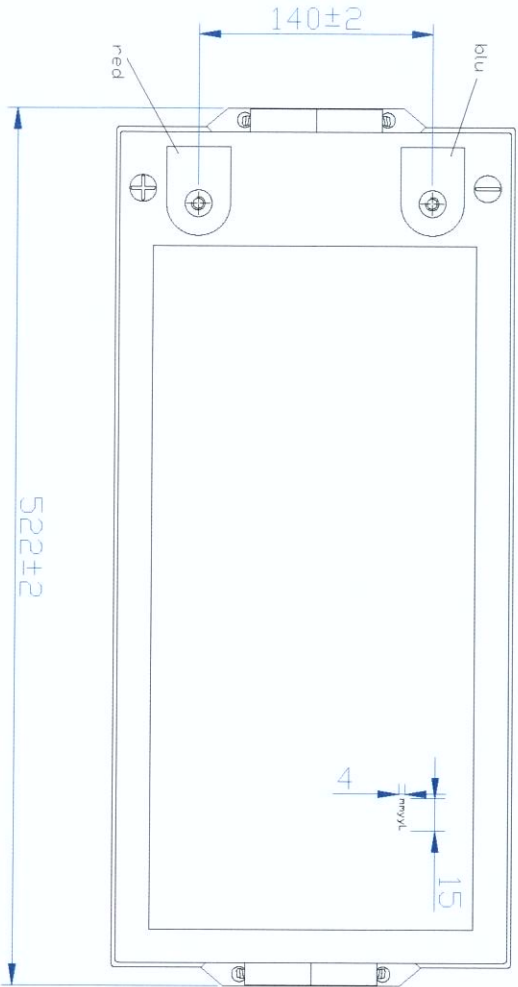
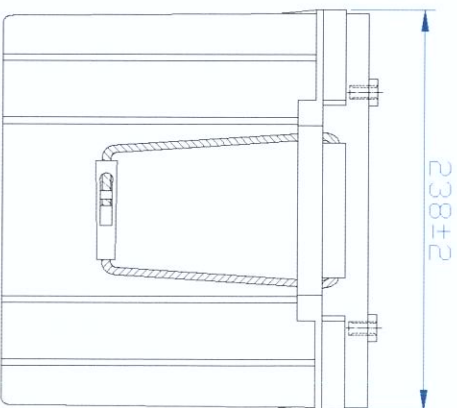
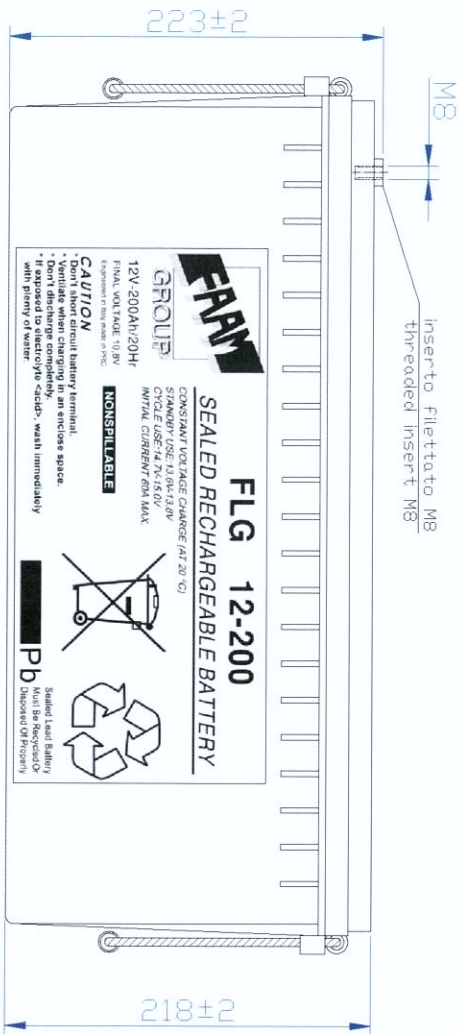


ELECTRICAL SPECIFICATION

Characteristics			Discharge curves @ 25°C (77 °F)	
Capacity	20 hour rate	200,00Ah	<p>Discharge Characteristics(25°C/77 ° F)</p>	
	10 hour rate	180,00Ah		
	5 hour rate	155,60Ah		
	3 hour rate	138,60Ah		
	1 hour rate	94,47Ah		
Capacity affected by temperature	40°C	102%	<p>Loading Voltage</p> <p>Discharge Time (min) (h)</p>	
	20°C	100%		
	0°C	85%		
Internal Resistance 3,3 mΩ ±10%		SCC 3500 A ±10%		
Constant Voltage Charge	Cycle	Initial Charging Current less than 50 A Voltage 14,4~15,0V at 20°C Temperature Coefficient -30 mV/°C		
	Stand by	No limit on Initial Charging Current Voltage 13,5~13,8V at 20°C Temperature Coefficient -20 mV/°C		

Constant Current(Amp) and Constant Power (Watt/Cell) Discharge Table at 25°C

Time		5min	15min	30min	60min	90min	120min	180min	300min	480min	600min
9.9V	A	272,37	193,18	135,21	114,38	90,64	76,61	46,30	31,75	21,89	18,90
	W	739,75	556,12	366,49	235,62	190,87	143,81	94,71	65,04	48,63	40,71
10.2V	A	247,52	191,18	131,17	93,92	74,42	62,90	46,20	31,63	21,80	18,62
	W	719,49	538,35	355,10	228,30	184,94	139,34	94,16	64,66	48,35	40,63
10.8V	A	198,81	166,54	124,61	91,73	72,68	61,43	45,68	31,12	21,46	18,00
	W	675,57	507,88	335,00	215,38	174,47	131,45	92,31	63,39	47,40	39,83



colour of box and lid: dark grey
colour of silkscreen: white

date of production: mmyyL
site of production
year of production
month of production

REV.	DATA/SITE	PROGETTISTA/DESIGNER	DISIGNATO/DESIGN	APPROVATO/APPROVED	REVISIONE: NOME/DOE/DESCRIPTION	REVISIONE
	INDICAZIONI GENERALI/GENERAL INDICATIONS	MATERIALI/MATERIALS		R. DI/WHO	DISIGNATO/DESIGNER	
	CALCOLO DI PRECISIONE/DIAGNOSI OF ACCURACY	ABS EVO Pb/Ca	BATTERIE STAZIONARIE/STATIONNARY BATTERY		R. PARENTI	
	NORMA UNI 5407/STANDARD UNI 5407				S. BALDASSARRI	
	SOSTITUZIONE IL/DI/SUBSTITUTION	SOSTITUITO DA/REPLACED BY: NOME TELEFONO/FILE	4 00215.dwg		F. PACIARINI	
SCALE/SCALE	FILE/DI/SHEET	CHIEDI/ORDER	FLG 12-200	SERIES GEL	CARICA/CHARGE	DISIGNATO/DESIGNER
1:3	A3				28.03.2007	TAU
INDICAZIONI GENERALI/GENERAL INDICATIONS		BATTERIA STAZIONARIA COD. FLG 12-200 12V 200Ah/20h gel/ STATIONNARY BATTERY CODE FLG 12-200 12V 200Ah/20h gel				DISIGNATO/DESIGNER
						4 00215-0
						1



FAAM S.P.A. Via Monti,11 63026 Monterubbiano (AP) ITALY
Tel. ++39/07342581 Fax. ++39/0734258229 www.faam.com

Questo disegno è di proprietà della FAAM e non può essere riprodotto o reso noto senza autorizzazione scritta. This drawing is a proprietary and shall not be reproduced or released to otherwise authorized by FAAM.



12V-200Ah/20Hr
FINAL VOLTAGE 10,8V
Engineered in Italy made in PRC

CAUTION

- * Don't short circuit battery terminal.
- * Ventilate when charging in an enclosed space.
- * Don't discharge completely.
- * If exposed to electrolyte <acid>, wash immediately with plenty of water.

FLG 12-200

SEALED RECHARGEABLE BATTERY

CONSTANT VOLTAGE CHARGE (AT 20 °C)

STANDBY USE: 13.6V-13.8V

CYCLE USE: 14.7V-15.0V

INITIAL CURRENT 60A MAX.

NONSPILLABLE



Sealed Lead Battery
Must Be Recycled Or
Disposed Of Properly

Pb