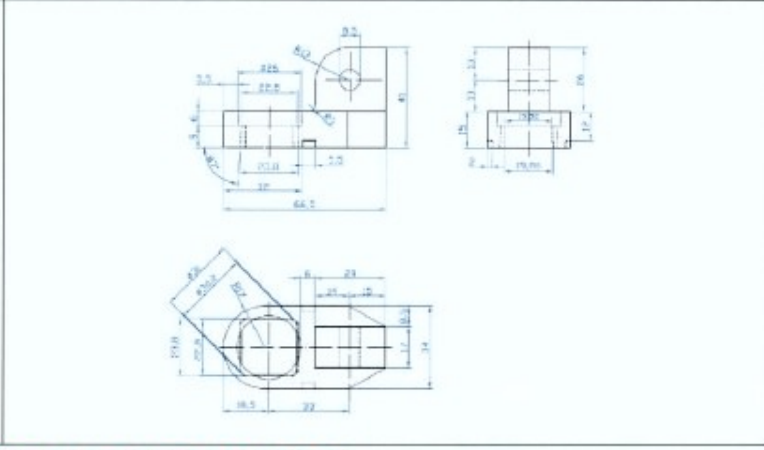
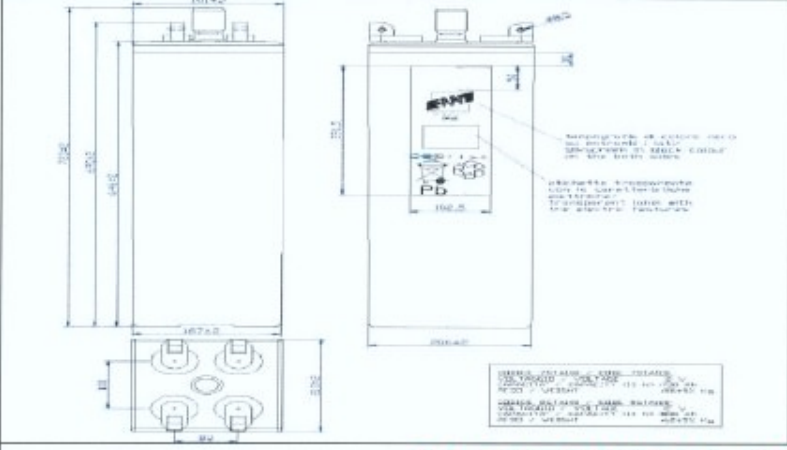
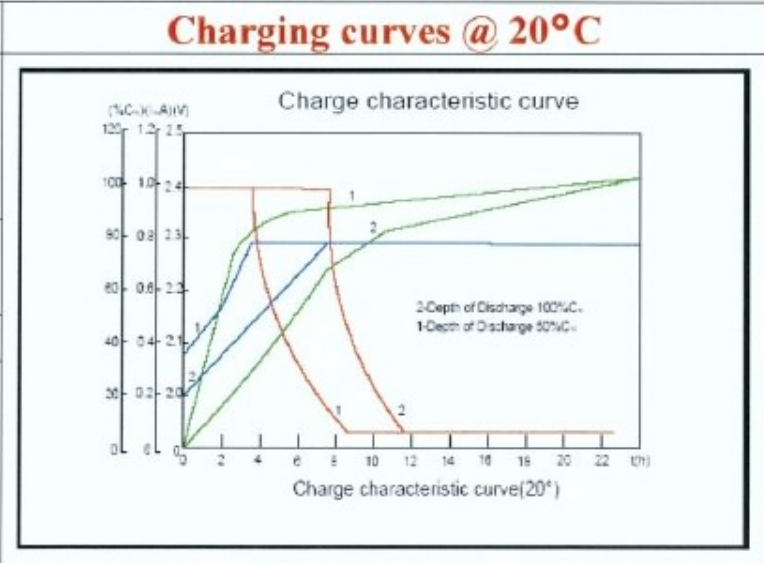


Nominal Voltage		2V
Nominal Capacity (10Hr)		800Ah
Dimension	Length	210 ±2mm
	Width	191 ±2mm
	Container Height	693 ±2mm
	Total Height	723 ±2mm
Drawing 400189-0		Weight 62,0 Kg ± 5%
Standard Terminal		Bolt Type: S 8



ELECTRICAL SPECIFICATION

Characteristics		
Capacity	10 hour rate	800,00Ah
	8 hour rate	770,32Ah
	5 hour rate	654,00Ah
	3 hour rate	583,86Ah
	1hour rate	384,00Ah
Capacity affected by temperature	40°C	102%
	20°C	100%
	0°C	85%
Internal Resistance 0,31 mΩ±10%		SCC 7000 A ±10%
Charge Voltage	Standby	Max Charge Current 160 A Floating Voltage 2,23V at 20°C Bost Charge 2,40V at 20°C Temperature Coefficient -20 mV/°C



Constant Current(Amp) and Constant Power (Watt/Cell) Discharge Table at 20°C

Time		30 min	60 min	90 min	2 h	3 h	5 h	8 h	10 h	100 h	120 h
1,65V	A	497,12	374,40	303,28	264,03	201,96	138,65	99,12	84,00	10,87	9,22
	W	1164,72	771,12	590,98	499,20	374,62	261,01	186,44	151,20	19,62	16,65
1,70V	A	470,35	363,20	297,30	258,82	194,62	137,34	98,18	83,20	10,97	9,31
	W	1110,54	745,20	570,24	482,26	364,06	259,78	185,56	150,28	19,55	16,58
1,80V	A	382,40	320,00	272,00	236,80	183,60	130,80	94,40	80,00	10,55	8,95
	W	902,88	648,00	518,40	445,71	340,56	246,24	175,39	144,00	18,99	16,11