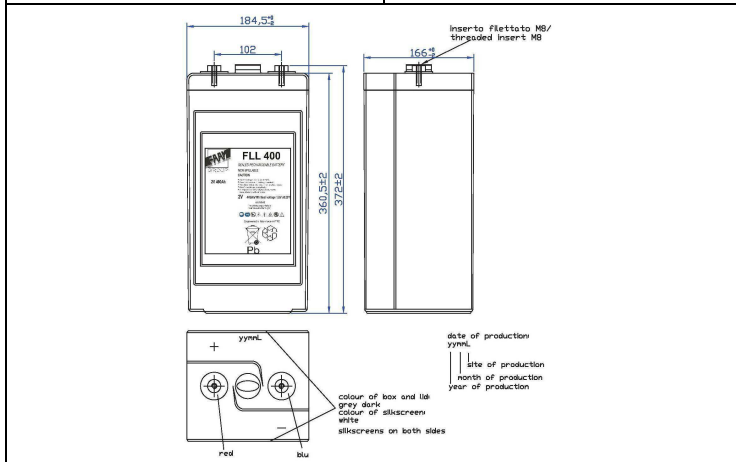




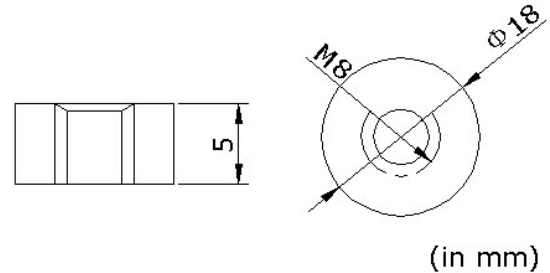
# FLL-400

## PHYSICAL SPECIFICATION

Nominal Voltage		2V		Box material : ABS FV0 Tensione di mantenimento a 20°C 2,27±0,02V/el Tensione di carica rapida 2,40±0,02V/el Autoscarica a 20°C 2%/mese Terminal hardware torque: 15 ±1 Nm Max charge current allowed :100A Tecnologia AGM 1200 cicli all'80%DOD Design cycles 15 years
Nominal Capacity (10Hr)		400Ah (1,80V) at 20°C		
Dimensions	Length	166 ±2mm		
	Width	184,5 ±2mm		
	Box Height	360,5 ±2mm		
	Total Height	372 ±2mm		
Drawing 4 00380-0		Weight 24,5 Kg ± 5%		
Standard Terminal		Bolt Screw Type: M8 female		



Bolt-and-nut terminal  
Bolt Type: M8



## ELECTRICAL SPECIFICATION

Characteristics			Discharge curves @ 25°C (77 °F)	
Capacity	10 hour rate (1,80V) 3 hour rate (1,80V) 1 hour rate (1,75V)	400,00Ah 300,00Ah 220,00Ah		
Capacity affected by temperature	40°C 20°C 0°C	102% 100% 85%		
Internal Resistance	0,35 mΩ ±10%	SCC 5000 A ±10%		
Constant Voltage Charge	Stand by use	Voltage 2,25V/cell at 20°C Temperature Coefficient -20 mV/el/°C		

### Constant Current(Amp) and Constant Power (Watt/Cell) Discharge Table at 20°C

Time		15min	30min	60min	2hour	3hour	4hour	5hour	8hour	10hour	24hour
1.65V	A	520	396	248	150	110	88,3	74,8	42	43,3	19,4
	W	911	715	498	319	242	195	164	109	90,4	41,5
1.70V	A	488	364	237	145	107	87,1	74,1	51,1	42,7	19,3
	W	878	697	474	310	233	188	160	107	87,8	40,2
1.80V	A	436	317	211	134	100	81,9	70,4	49,5	40	18,7
	W	806	649	445	293	216	178	152	100	85,1	39,0