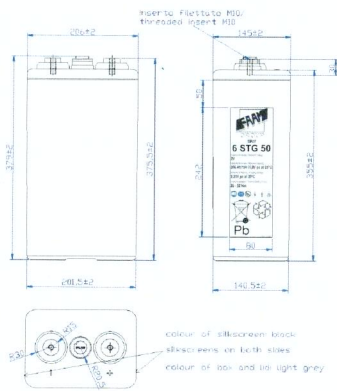
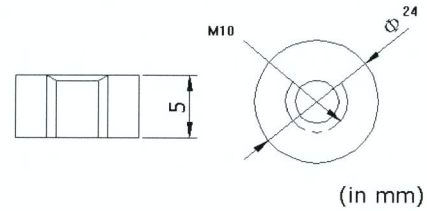
	<h1>6STG50</h1>
--	-----------------

### PHYSICAL SPECIFICATION

Nominal Voltage Nominal Capacity (10Hr)		2V 300Ah	Container and lid ABS, FV0 on request
Dimension	Length	206 ±2mm	
	Width	145 ±2mm	
	Container Height	355 ±2mm	
	Total Height	379 ±2mm	
Drawing 400303-0		Weight 28,0 Kg ± 5%	
Standard Terminal		Bolt Type: M10	



Bolt-and-nut terminal  
Bolt Type: **M10**

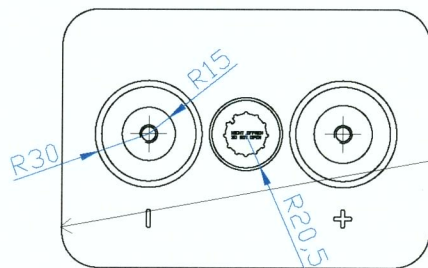
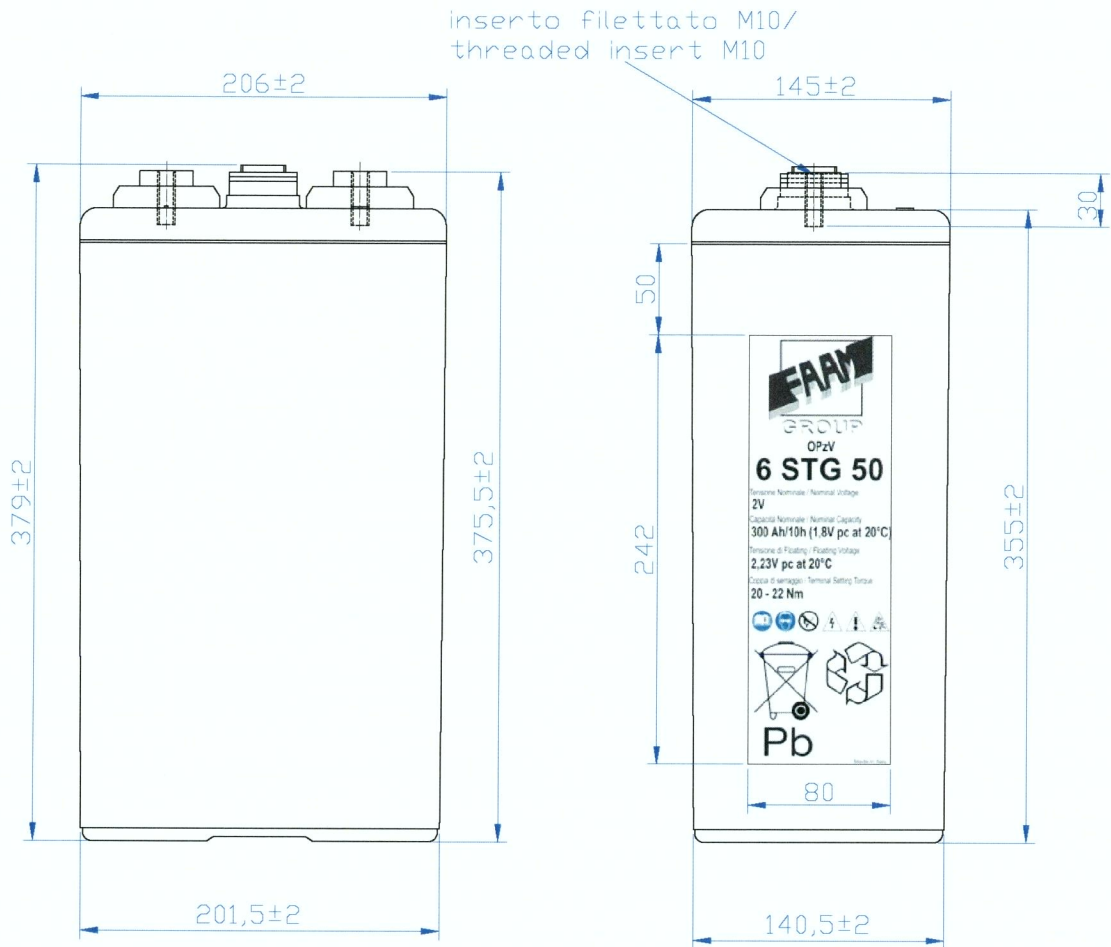


### ELECTRICAL SPECIFICATION

Characteristics			Charging curves @ 20°C	
Capacity	10 hour rate	300,00Ah		
	8 hour rate	279,76Ah		
	5 hour rate	242,85Ah		
	3 hour rate	231,69Ah		
	1hour rate	201,60Ah		
Capacity affected by temperature	40°C	102%		
	20°C	100%		
	0°C	85%		
Internal Resistance 0,7 mΩ±10%		SCC 3250 A ±10%		
Charge Voltage	Standby	Max Charge Current 60 A Floating Voltage 2,23V at 20°C Best Charge 2,35V at 20°C Temperature Coefficient -20 mV/°C		

### Constant Current(Amp) and Constant Power (Watt/Cell) Discharge Table at 20°C

Time		30 min	60 min	90 min	2 h	3 h	5 h	8 h	10 h	100 h	120 h
1,65V	A	275,40	187,20	154,71	104,00	80,14	51,49	36,00	31,50	4,08	3,46
	W	501,97	374,45	303,44	236,02	179,49	117,53	80,24	66,15	8,60	7,30
1,70V	A	266,14	179,20	149,29	100,29	77,23	51,00	35,66	31,20	4,12	3,49
	W	484,80	358,44	292,79	227,59	172,96	116,42	79,48	65,52	8,68	7,37
1,80V	A	231,43	160,00	135,71	92,86	72,86	48,57	34,29	30,00	3,96	3,36
	W	429,03	320,04	266,18	210,74	163,17	110,88	76,42	63,00	8,35	7,09



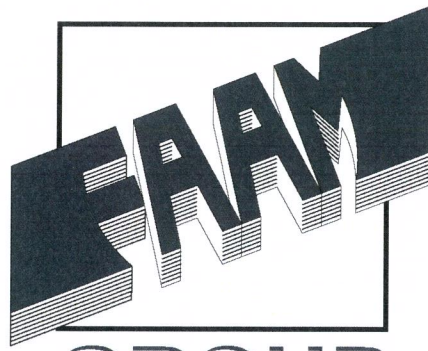
colour of silkscreen: black  
 silkscreens on both sides  
 colour of box and lid: light grey

REV.	DATA/DATE	PROGETTISTA/DESIGNER	DISEGNATO/DRAWN	APPROVATO/APPROVED	DESCRIZIONE MODIFICHE/DESCRIPTION REVISIONS	
INDICAZIONI GENERALI/GENERAL INDICATIONS GRADO DI PRECISIONE/DEGREE OF ACCURACY NORMA UNI 5307/STANDARD UNI 5307			MATERIALE/MATERIAL: ABS /Pb-Ca	R (N/mm <sup>2</sup> ):	DUREZZA/HARDNESS:	PROGETTISTA/DESIGNER: R. PARENTI
SOSTITUISCE IL/SUPERSEDES:			PROGETTO GENERALE-COMPLESSIVO/GENERAL PLAN-TOTAL PLAN: ELEMENTI STAZIONARI/STATIONARY CELLS		DISEGNATO/DRAWN: S. BALDASSARRI	
SOSTITUITO DAL/SUPERSEDS BY:		NOME FILE/NAME FILE: 4 00303.dwg			APPROVATO/APPROVED: F. PAGLIARINI	
SCALA/SCALE: 1:4		FOGLIO/SHEET: A4	CODICE/COE: 6STG50	TIPO/TYP: Series STG GEL	VERSIONE/VERSION: CARICA/CHARGE	DATA/DATE: 18.05.2010
DENOMINAZIONE/PART DESCRIPTION: ELEMENTO STAZIONARIO COD. 6STG50 (300Ah/10h) 2V gel/ STATIONARY CELL CODE 6STG50 (300Ah/10h) 2V gel					DISEGNO N°-REV./ DRAWING N°-REV.:	TAV.: 1
					4 00303-0	1



**FAAM S.p.A.** Via Monti,11 63026 Monterubbiano (AP) ITALY  
 Tel. ++39/07342581 Fax. ++39/0734258229 www.faam.com

Questo disegno è di proprietà della FAAM e non può essere riprodotto o reso noto senza autorizzazione scritta.  
 This drawing is a proprietary and shall not be reproduced or released to otherwise authorized by FAAM:



GROUP

OPzV

# 6 STG 50

Tensione Nominale / Nominal Voltage

**2V**

Capacità Nominale / Nominal Capacity

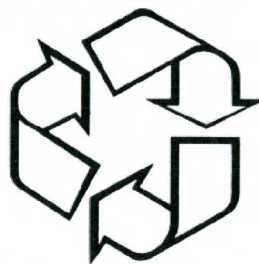
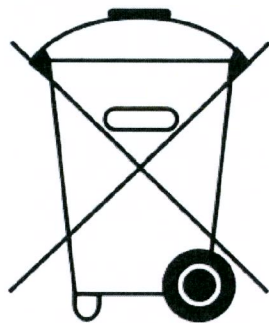
**300 Ah/10h (1,8V pc at 20°C)**

Tensione di Floating / Floating Voltage

**2,23V pc at 20°C**

Coppia di serraggio / Terminal Setting Torque

**20 - 22 Nm**



**Pb**

Made in Italy