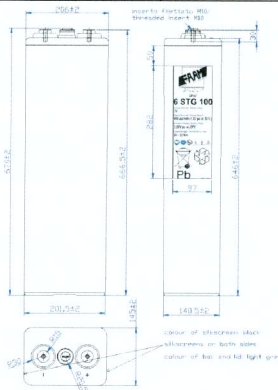
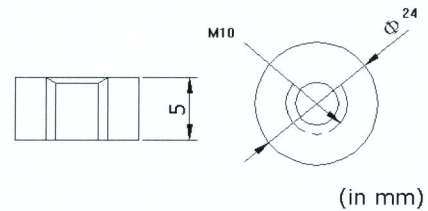
	<h1>6STG100</h1>
--	------------------

PHYSICAL SPECIFICATION

Nominal Voltage		2V	Container and lid ABS, FV0 on request
Nominal Capacity (10Hr)		600Ah	
Dimension	Length	206 ±2mm	
	Width	145 ±2mm	
	Container Height	646 ±2mm	
	Total Height	670 ±2mm	
Drawing 400257-0		Weight	48,5 Kg ± 5%
Standard Terminal		Bolt Type: M10	



Bolt-and-nut terminal
Bolt Type: **M10**

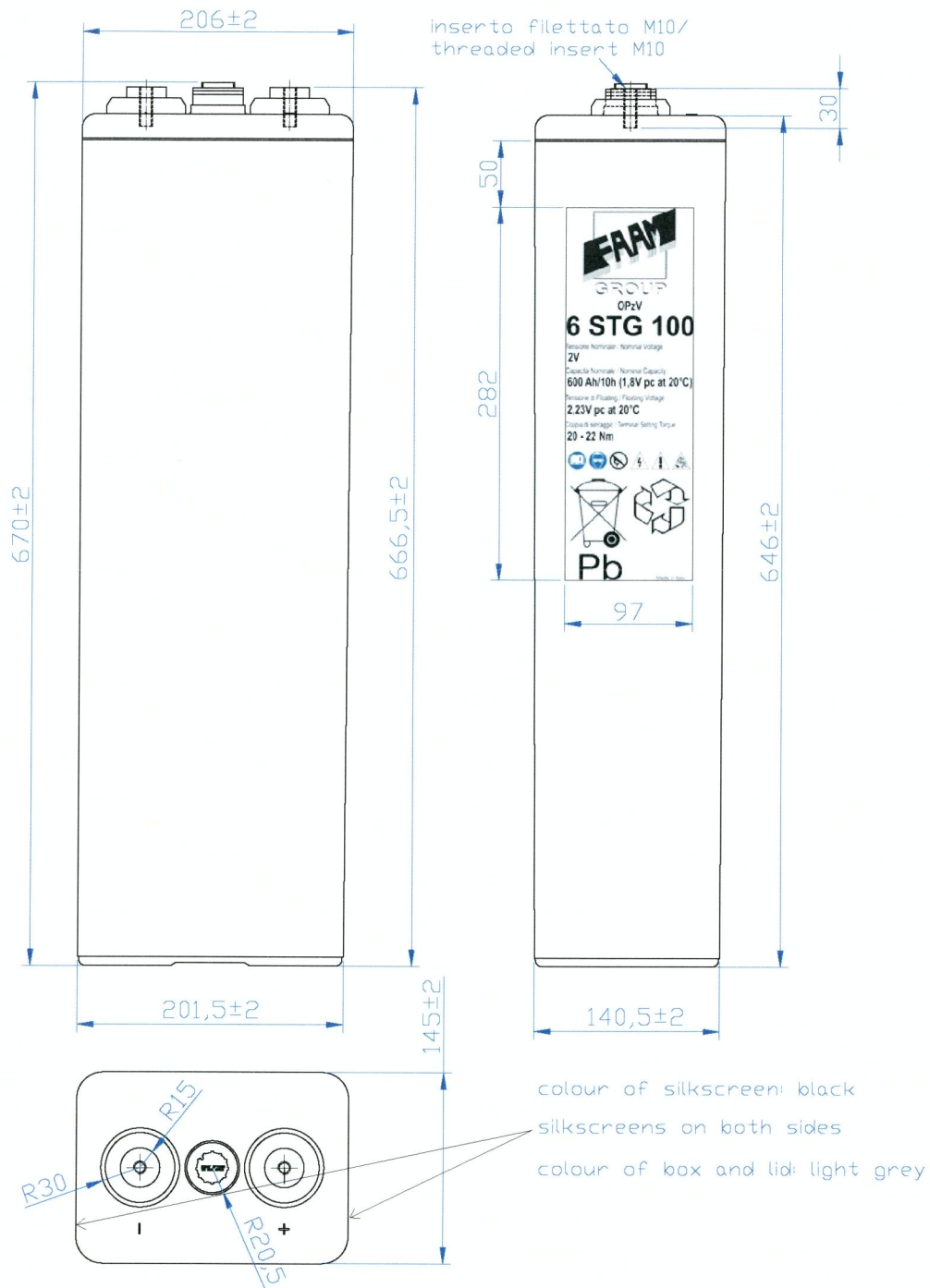


ELECTRICAL SPECIFICATION

Characteristics			Charging curves @ 20°C
Capacity	10 hour rate	600,00Ah	<p>Constant Charge At 0.10CA2, 35V(±0.5°C)</p>
	8 hour rate	559,52Ah	
	5 hour rate	485,70Ah	
	3 hour rate	463,38Ah	
	1 hour rate	403,20Ah	
Capacity affected by temperature	40°C	102%	
	20°C	100%	
	0°C	85%	
Internal Resistance 0,41 mΩ±10%		SCC 5200 A ±10%	
Charge Voltage	Standby	Max Charge Current 120 A Floating Voltage 2,23V at 20°C Boost Charge 2,35V at 20°C Temperature Coefficient -20 mV/°C	

Constant Current(Amp) and Constant Power (Watt/Cell) Discharge Table at 20°C

Time		30 min	60 min	90 min	2 h	3 h	5 h	8 h	10 h	100 h	120 h
1,65V	A	550,80	374,40	309,43	208,00	160,29	102,97	72,00	63,00	8,15	6,92
	W	800,37	660,35	556,59	460,77	361,28	240,75	169,93	142,80	16,39	13,73
1,70V	A	532,29	358,40	298,57	200,57	154,46	102,00	71,31	62,40	8,23	6,98
	W	773,01	632,13	537,06	444,31	348,15	238,48	168,31	141,44	16,55	13,86
1,80V	A	462,86	320,00	271,43	185,71	145,71	97,14	68,57	60,00	7,91	6,71
	W	684,08	564,40	488,24	411,40	328,44	227,12	161,84	136,00	15,91	13,33



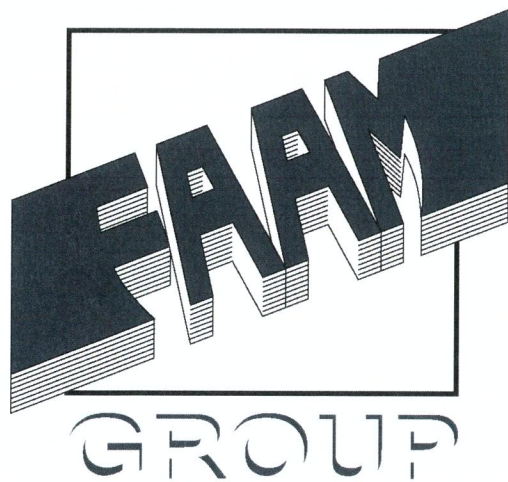
REV.	DATA/DATE	PROGETTISTA/DESIGNER	DISIGNATO/DRAWN	APPROVATO/APPROVED	DESCRIZIONE MODIFICHE/DESCRIPTION REVISIONS		
INDICAZIONI GENERALI/GENERAL INDICATIONS			MATERIALE/MATERIAL:	R (N/nm2)	DUREZZA/HARDNESS:	PROGETTISTA/DESIGNER:	
GRADO DI PRECISIONE/DEGREE OF ACCURACY			ABS/Pb-Ca			R. PARENTI	
NORMA UNI 5307/STANDARD UNI 5307			PROGETTO GENERALE-COMPLESSIVO/GENERAL PLAN-TOTAL PLAN:			DISIGNATO/DRAWN:	
			ELEMENTI STAZIONARI/STATIONARY CELLS			S. BALDASSARRI	
SOSTITUISCE IL/SUPERSEDES:		SOSTITUITO DAL/SUPERSEDS BY:	NOME FILE/NAME FILE:			APPROVATO/APPROVED:	
			4 00257.dwg			F. PAGLIARINI	
SCALA/SCALE:		FOGLIO/SHEET:	CODICE/COE:	TIPO/TYPE:	VERSIONE/VERSION:	DATA/DATE:	
1:5		A4	6STG100	Series STG GEL	CARICA/CHARGE	30.10.2009	
DENOMINAZIONE/PART DESCRIPTION:						DISIGNO N°-REV./DRAWING N°-REV.:	TAV.:
ELEMENTO STAZIONARIO COD. 6STG100 (600Ah/10h) 2V gel/ STATIONARY CELL CODE 6STG100 (600Ah/10h) 2V gel						4 00257-0	1



FAAM S.p.A. Via Monti,11 63026 Monterubbiano (AP) ITALY

Tel. ++39/07342581 Fax. ++39/0734258229 www.faam.com

Questo disegno è di proprietà della FAAM e non può essere riprodotto o reso noto senza autorizzazione scritta.
This drawing is a proprietary and shall not be reproduced or released to otherwise authorized by FAAM.



OPzV

6 STG 100

Tensione Nominale / Nominal Voltage

2V

Capacità Nominale / Nominal Capacity

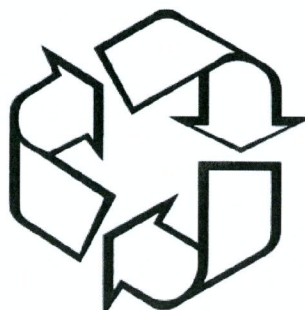
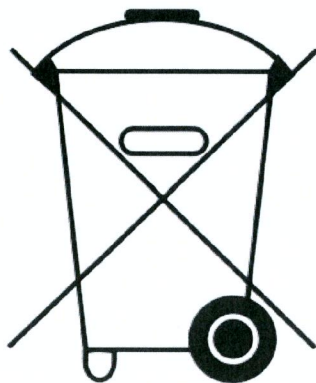
600 Ah/10h (1,8V pc at 20°C)

Tensione di Floating / Floating Voltage

2,23V pc at 20°C

Coppia di serraggio / Terminal Setting Torque

20 - 22 Nm



Pb

Made in Italy