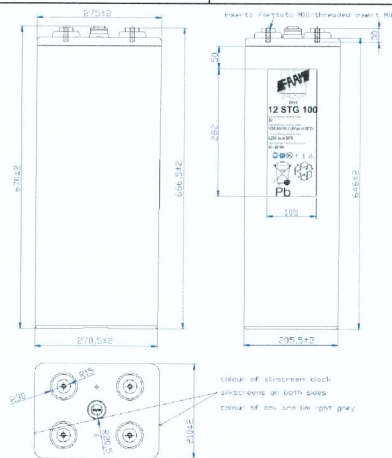


12STG100

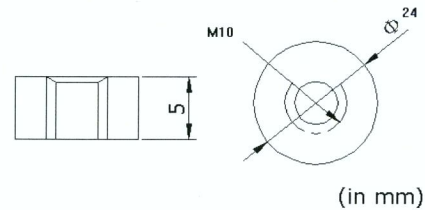


PHYSICAL SPECIFICATION

| | | |
|-------------------------|------------------|---------------------|
| Nominal Voltage | | 2V |
| Nominal Capacity (10Hr) | | 1200Ah |
| Dimension | Length | 275 ±2mm |
| | Width | 210 ±2mm |
| | Container Height | 646 ±2mm |
| | Total Height | 670 ±2mm |
| Drawing 400307-0 | | Weight 97,0 Kg ± 5% |
| Standard Terminal | | Bolt Type: M10 |



Bolt-and-nut terminal
Bolt Type: **M10**

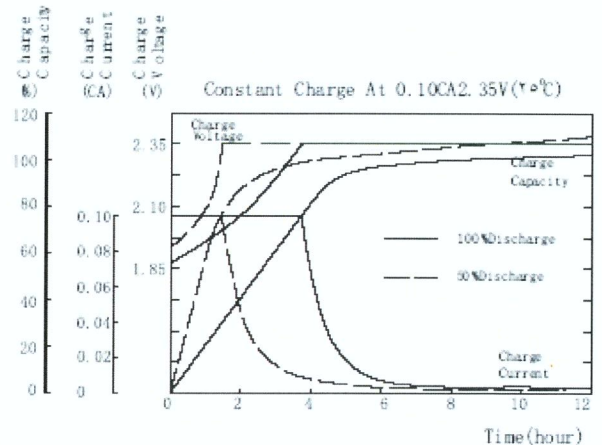


ELECTRICAL SPECIFICATION

Characteristics

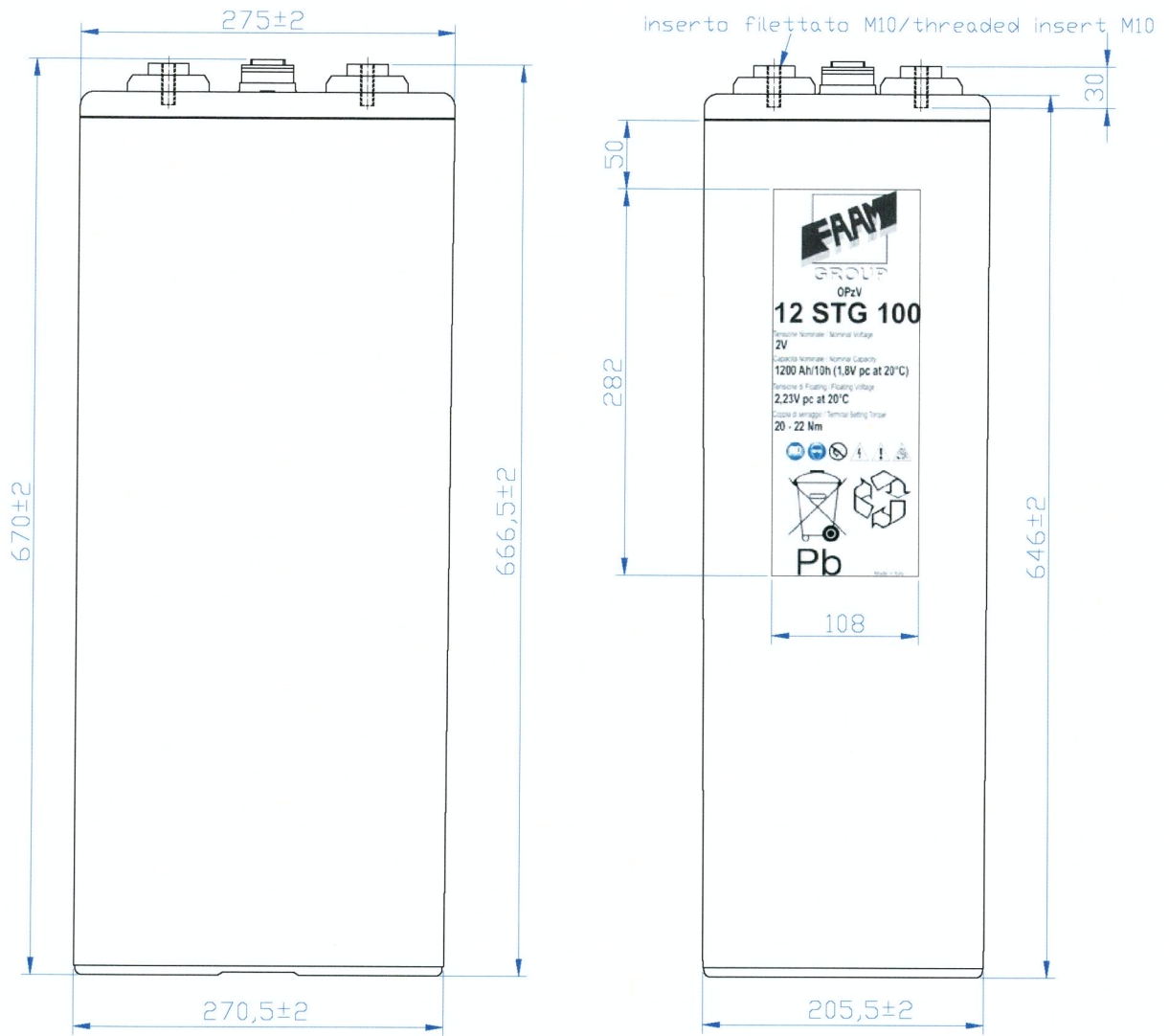
| | | |
|----------------------------------|--------------|--|
| Capacity | 10 hour rate | 1200,00Ah |
| | 8 hour rate | 1119,12Ah |
| | 5 hour rate | 971,45Ah |
| | 3 hour rate | 926,73Ah |
| | 1 hour rate | 806,39Ah |
| Capacity affected by temperature | 40°C | 102% |
| | 20°C | 100% |
| | 0°C | 85% |
| Internal Resistance 0,20 mΩ±10% | | SCC 9500 A ±10% |
| Charge Voltage | Standby | Max Charge Current 240 A Floating Voltage 2,23V at 20°C Best Charge 2,35V at 20°C Temperature Coefficient -20 mV/°C |

Charging curves @ 20°C



Constant Current(Amp) and Constant Power (Watt/Cell) Discharge Table at 25°C

| Time | | 30 min | 60 min | 90 min | 2 h | 3 h | 5 h | 8 h | 10 h | 100 h | 120 h |
|-------|---|---------|---------|---------|--------|--------|--------|--------|--------|-------|-------|
| 1,65V | A | 1101,60 | 748,80 | 618,86 | 416,00 | 320,57 | 205,94 | 144,00 | 126,00 | 16,30 | 13,83 |
| | W | 1612,52 | 1330,41 | 1121,37 | 928,31 | 727,88 | 485,03 | 342,36 | 287,70 | 33,02 | 27,66 |
| 1,70V | A | 1064,57 | 716,80 | 597,14 | 401,14 | 308,91 | 204,00 | 142,63 | 124,80 | 16,46 | 13,97 |
| | W | 1557,39 | 1273,55 | 1082,03 | 895,16 | 701,41 | 480,46 | 339,10 | 284,96 | 33,34 | 27,93 |
| 1,80V | A | 925,71 | 640,00 | 542,86 | 371,43 | 291,43 | 194,29 | 137,14 | 120,00 | 15,83 | 13,43 |
| | W | 1378,22 | 1137,10 | 983,66 | 828,85 | 661,71 | 457,58 | 326,06 | 274,00 | 32,06 | 26,85 |



colour of silkscreen: black
 silkscreens on both sides
 colour of box and lid: light grey

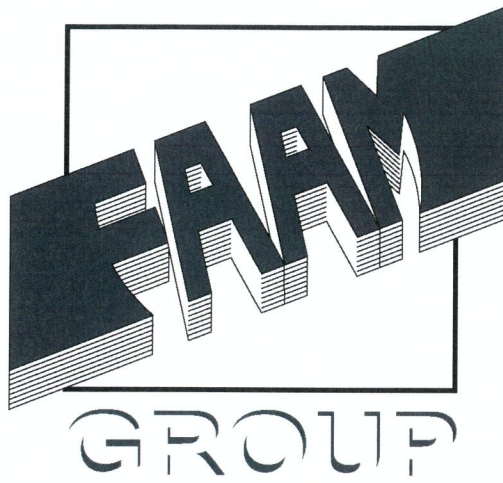
| REV. | DATA/DATE | PROGETTISTA/DESIGNER | DISEGNATO/DRAWN | APPROVATO/APPROVED | DESCRIZIONE MODIFICHE/DESCRIPTION REVISIONS | | |
|--|-----------|------------------------------|--|----------------------|---|----------------------------------|-------|
| INDICAZIONI GENERALI/GENERAL INDICATIONS | | | MATERIALE/MATERIAL: | R (N/nh2) | DUREZZA/HARDNESS: | PROGETTISTA/DESIGNER: | |
| GRADO DI PRECISIONE/DEGREE OF ACCURACY | | | ABS/Pb-Ca | | | R. PARENTI | |
| NORMA UNI 5307/STANDARD UNI 5307 | | | PROGETTO GENERALE-COMPLESSIVO/GENERAL PLAN-TOTAL PLAN: | | | DISEGNATO/DRAWN: | |
| | | | ELEMENTI STAZIONARI/STATIONARY CELLS | | | S. BALDASSARRI | |
| SOSTITUISCE IL/SUPERSEDES: | | SOSTITUITO DAL/SUPERSEDS BY: | | NOME FILE/NAME FILE: | | APPROVATO/APPROVED: | |
| | | | | 4 00307.dwg | | F. PAGLIARINI | |
| SCALA/SCALE: | | FOGLIO/SHEET: | CODICE/CODE: | TIPO/TYP: | VERSIONE/VERSION: | DATA/DATE: | |
| 1:5 | | A4 | 12STG100 | Series STG GEL | CARICA/CHARGE | 18.05.2010 | |
| DENOMINAZIONE/PART DESCRIPTION: | | | | | | DISEGNO N°-REV./DRAWING N°-REV.: | TAV.: |
| ELEMENTO STAZIONARIO COD. 12STG100 (1200Ah/10h) 2V gel/ STATIONARY CELL CODE 12STG100 (1200Ah/10h) 2V gel | | | | | | 4 00307-0 | 1 |



FAAM S.p.A. Via Monti,11 63026 Monterubbiano (AP) ITALY

Tel. ++39/07342581 Fax. ++39/0734258229 www.faam.com

Questo disegno è di proprietà della FAAM e non può essere riprodotto o reso noto senza autorizzazione scritta.
 This drawing is a proprietary and shall not be reproduced or released to otherwise authorized by FAAM.



OPzV

12 STG 100

Tensione Nominale / Nominal Voltage

2V

Capacità Nominale / Nominal Capacity

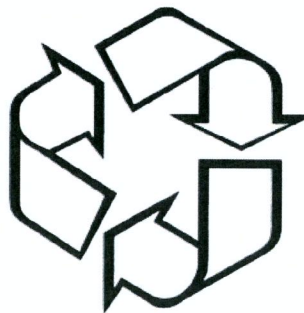
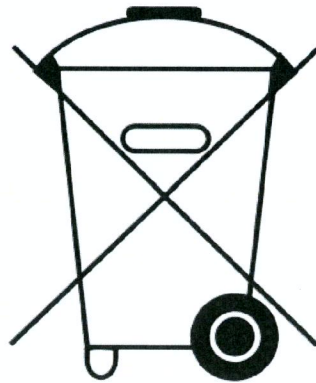
1200 Ah/10h (1,8V pc at 20°C)

Tensione di Floating / Floating Voltage

2,23V pc at 20°C

Coppia di serraggio / Terminal Setting Torque

20 - 22 Nm



Pb

Made in Italy