

EV CHARGING INDUSTRY

EV CHARGING STATION

BESEN



LCD Screen

The new awesome display indicates more information, including real-time current and voltage, board temperature, charging time and power, even exact charging faults during the charging



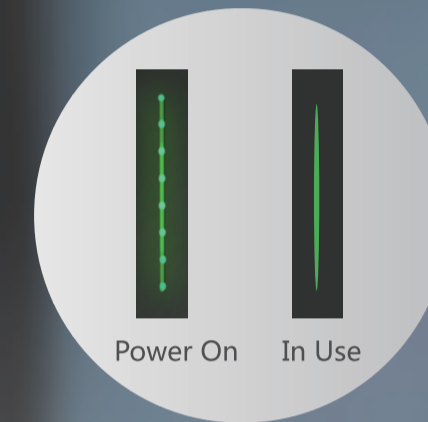
Key Switch/Button Switch

Can choose one version between the Two Switch options above.



PC-ABS Material

PC-ABS offers the most desirable properties of both materials - the superior strength and heat resistance of PC and the flexibility of ABS



LED Flash

The LED light would blink in different ways to indicate different problems which will help you to know the charging situation right now.



High Compatibility

Fitting all EVs with Type 1 and Type 2 inlet, 100% correctly and effectively.



Authority:

-IP66
-Certificate: CSA CE
-EN 61851-1 :2011
-EN 61851-22 :2002

Charging Current:

-110V-220V BS-B10-BC3.6KW 16A/50HZ 1Phase (With Tethered Lead)
-110V-220V BS-B10-BC7.2KW 32A/60HZ 1Phase (With Tethered Lead)

Charging Standard:

-SAE J1772 2009 (Type 1) North American standard
-Meet IEC 62196-2 (Mennekes, Type 2) EU European standard
-High compatibility with T1/T2 vehicle

Customized Service

-The Logo of boot display and printed on panel
-Panel color can be customized
-RFID swiping card function can be customized
-Wire length can be customized
-Adjustable Current Can Be Customized(8A/10A/16A/32A/40A)

BESEN INTERNATIONAL GROUP CO.,LTD

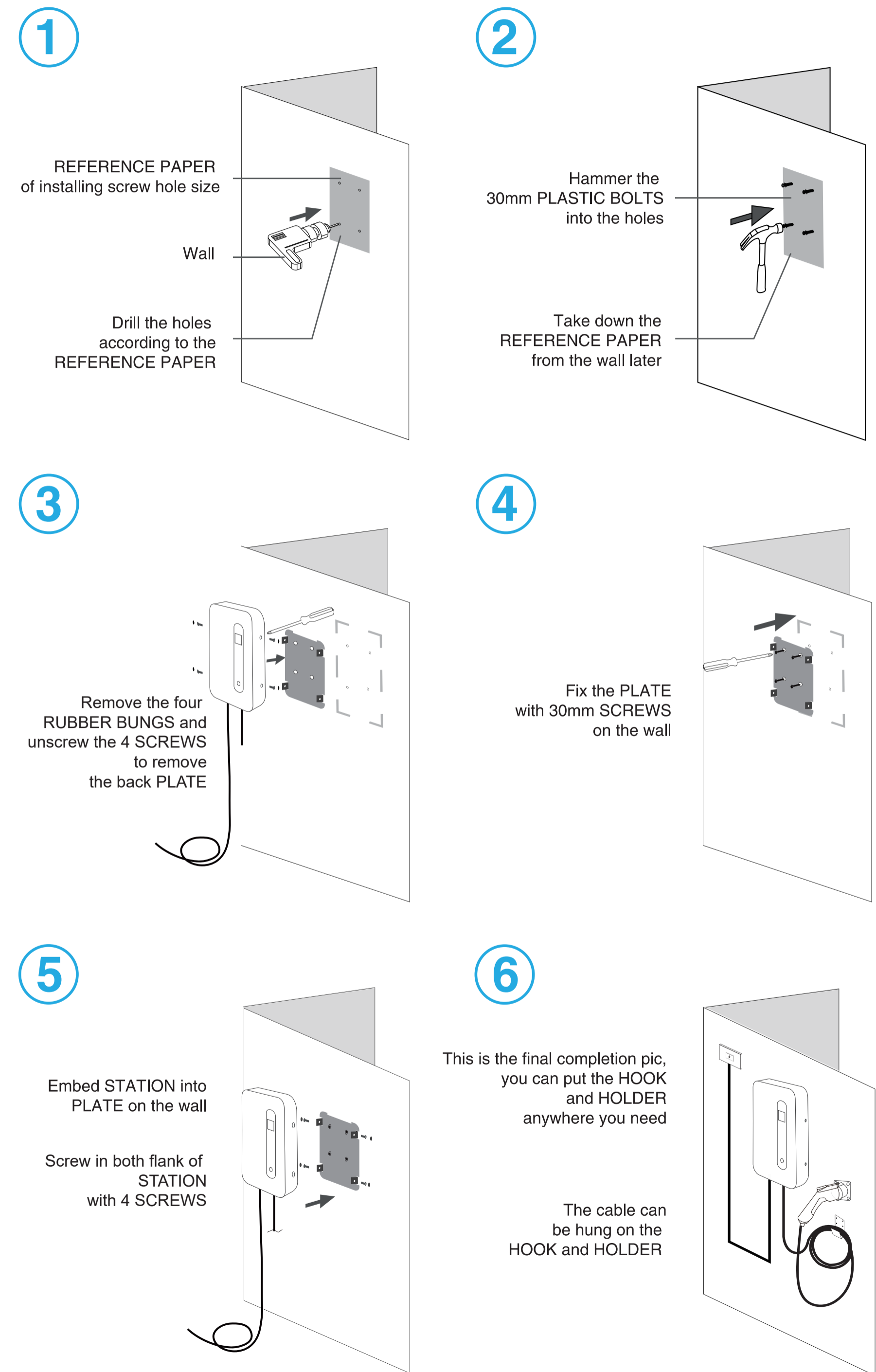
Web: www.besen-group.com Tel: +86-25-8662-3210
E-mail: info@besen-group.com Fax: +86-25-8662-3210
LEADING THE EV CHARGING TO A BETTER WAY

Level 2 EV Charging Station

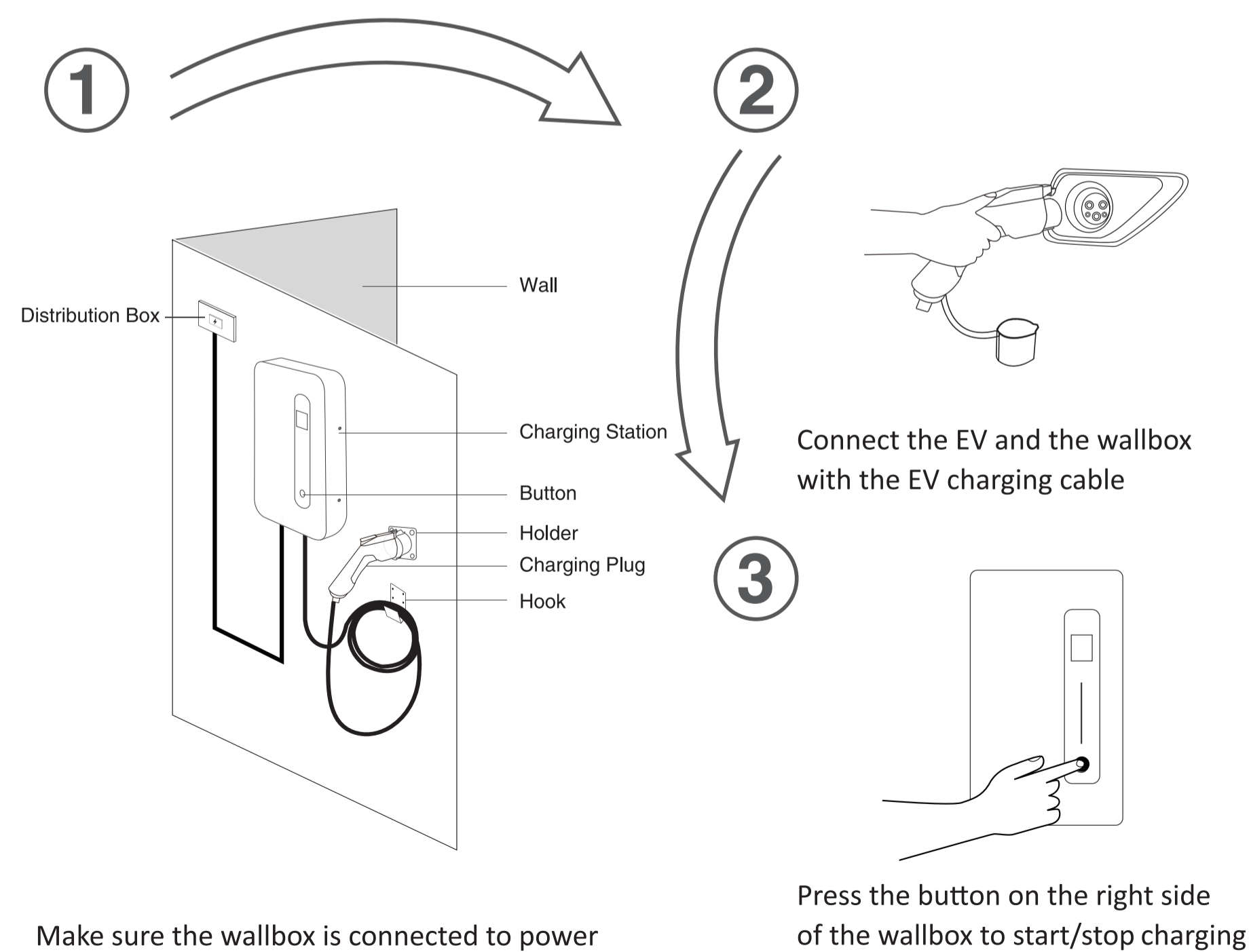
Installation Method: Wall/Stand
 Mode: C(with plug)
 Certificate: TUV,CE
 IP Rating: IP66
 Rated Voltage: 230VAC±10%
 Rated Current: 32A
 Maximum Power: 7.68kw
 Phase Mode: Single Phase
 Operating Temperature: -40℃ ~ 88℃
 Enclosure Material: ABS

Security Protection:
 Warning and display functions
 Open circuit protection
 Output overcurrent protection
 Input under voltage protection
 Over temperature protection
 Ground protection
 Input overvoltage protection
 Charge status detection
 Start Mode: Button(default)

Installation Guide



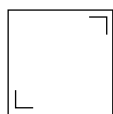
Instruction for Use



◆ Hang the cable on the hook when it is not in use



Mode C
(with plug+cable)



LCD

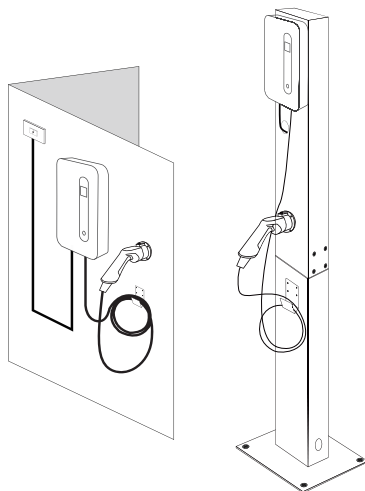


LED Flash



Button Switch

Installation Method: Wall/Stand



This is a simple wallbox, only has one connect kind: ModeC. And it can only be installed on the wall. It comes with a colorful LCD display that allows users to clearly see the current charging status including charging time, voltage, current internal temperature etc.

It can automatically fix non-hardware faults that occur during charging. Faults that require manual repair will be displayed on the LCD screen. The housing is sturdy and has an IP66 rating.

It can be easily installed on the wall. If the customer prefers wallbox to be installed on the stand, we can provide the matching one.

MODEL F30

Input & Output

Input voltage/Output voltage	100~250V AC
Input frequency	47~63Hz
Max. output power	8.8KW
Max. output current	40A
Charging interface type	IEC 62196-2, SAE J1772

Protection

Over voltage protection	✓
Under voltage protection	✓
Over load protection	✓
Short circuit protection	✓
Earth leakage protection	✓
Over-temp protection	✓
Lightning protection	✓

Function and Accessory

Ethernet/WIFI/4G/Bluetooth	No
LCD	3.5-inch color display
RCD	Type A
LED Indicator light	✓
Intelligent power adjustment	✓
RFID	No

Working environment

Protection degree	IP66
Environment temperature	-40 C ~ +75 C
Relative humidity	0-95% non-condensing
Maximum altitude	<2000m
Cooling	Natural air cooling
Standby power consumption	<8W

Mechanical

Dimension (W/H/D)	330/200/75mm
Weight	6KG

Mounting Accessories

Wall-mounting bracket	✓
Ground-mounting pole	Optional

Certificate

Certificate	CE, FCC, RoHS
-------------	---------------